



## PIX 13

RADIOGRAPHY

Leeds Test Objects' PIX-13 phantom is designed to be used to check the image quality performance of digital radiography x-ray systems. These tests should be carried out at acceptance to establish a baseline, and on a routine basis, keeping an on-going record of the test results, which will indicate any deterioration in performance.

PIX-13 has been designed in accordance with the DIN 6868-13 standard and features the following test details:

1. Tube axis direction markings
2. Limiting spatial resolution (0.6 – 5.0 LP/mm)
3. Low contrast resolution details (6 x 15mm diameter details)
4. Dynamic range (7 different thickness Cu steps)
5. Unstructured area for placement of dosimeter
6. Unstructured area for homogeneity and signal adjustment (centre-marked)
7. Cassette size alignment markers (radiopaque)
8. X-ray to light field alignment markers (radiopaque)

PIX-13 should be used with either PMMA/Cu or Al attenuator plates (available separately).

The phantom is supplied in a soft protective carry bag.



For more information or to find your regional distributor please visit our website



# PIX 13

RADIOGRAPHY



PIX 13

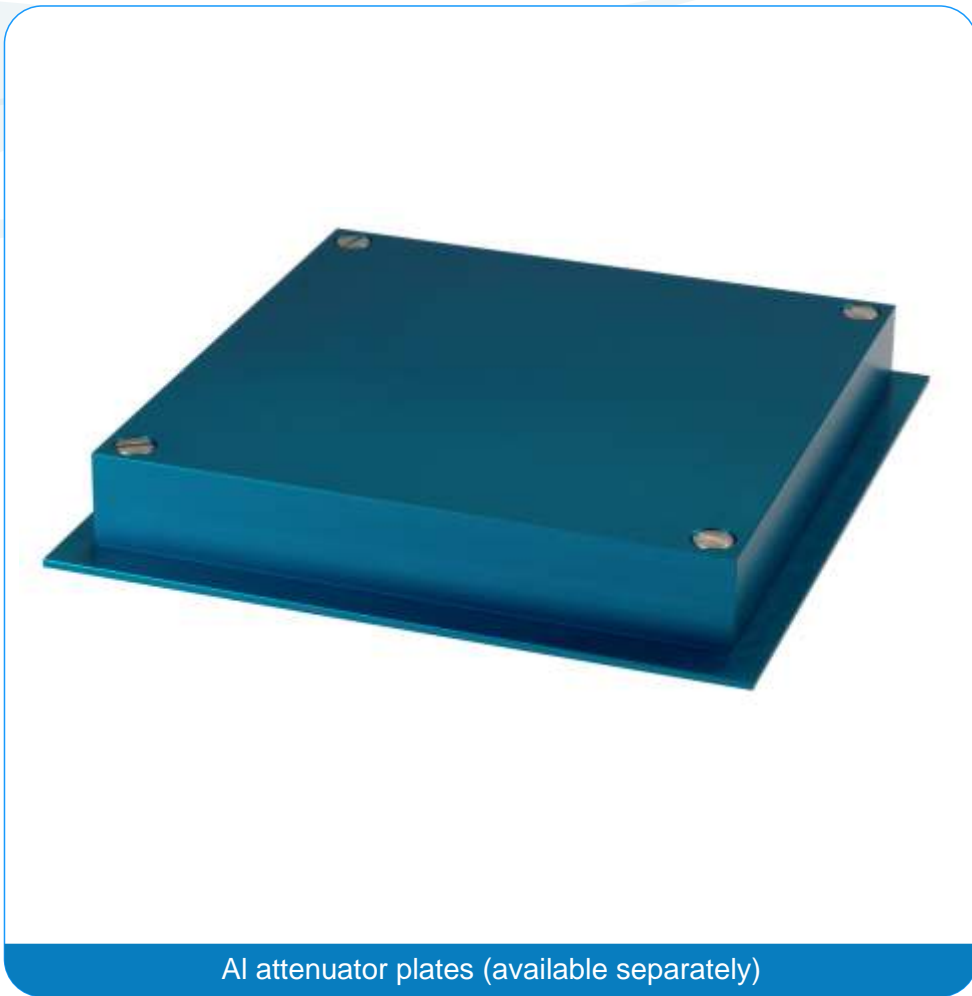
For more information or to find your regional distributor please visit our website

[www.leadstestobjects.com](http://www.leadstestobjects.com) | tel. +44(0)1423 321102



# PIX 13

RADIOGRAPHY



Al attenuator plates (available separately)

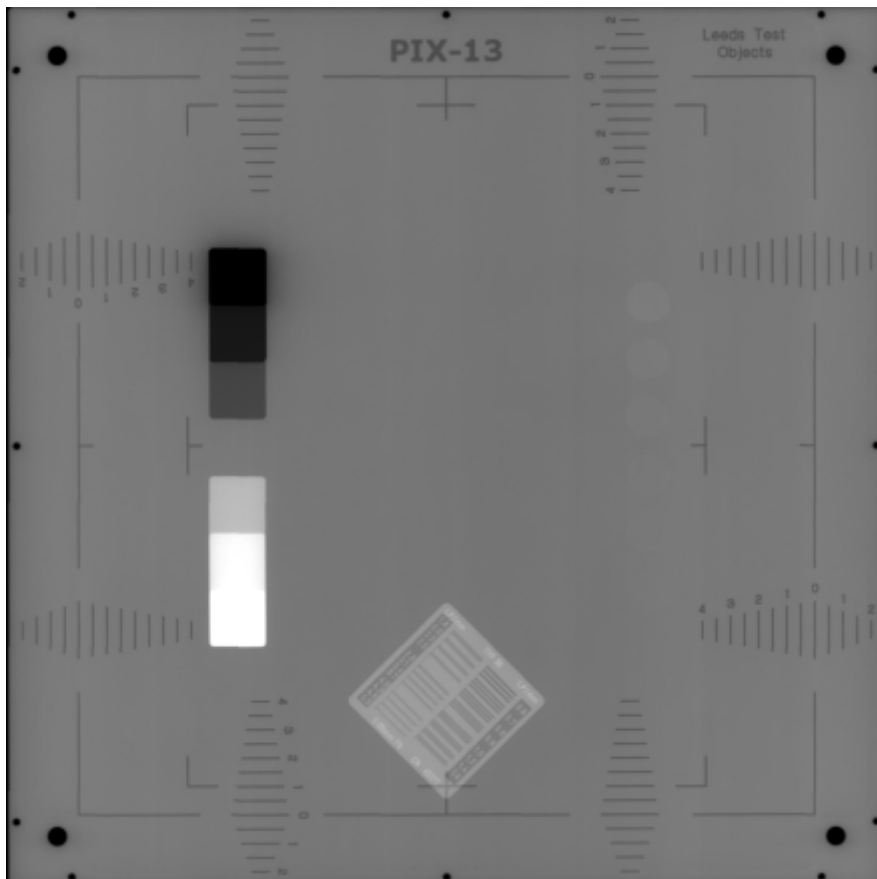
For more information or to find your regional distributor please visit our website

[www.leadstestobjects.com](http://www.leadstestobjects.com) | tel. +44(0)1423 321102



# PIX 13

RADIOGRAPHY



PIX-13 RADIOGRAPH

For more information or to find your regional distributor please visit our website

[www.leadstestobjects.com](http://www.leadstestobjects.com) | tel. +44(0)1423 321102

Copyright © 2011 Leeds Test Objects Ltd | SpecSh 189b 16/02/2012