

Rotational Therapy Phantom

GAMMEX 507

The NEW Gammex 507 Rotational Therapy Phantom is designed to meet the unique daily Quality Assurance requirements of the Hi-Art linear accelerator, and any other system that performs rotational radiation treatment. The Gammex 507 innovative system for quality control of rotational therapy includes a phantom and software which provides a method of performing seven crucial quality control checks of the rotational system in less than 6 minutes:

- Rotational output rate constancy
- Rotational energy constancy
- Gantry speed constancy
- Gantry position constancy
- MLC synchrony with gantry position
- Stationary and movable lasers position
- Beam lateral profile

The phantom's unique design consists of a block of Gammex's proprietary Solid Water® with two co-centric hemi-cylinders with two ion chamber holes, one at the center of the phantom, and one 15 cm away from center. The analytical software allows inspection of the MLC and gantry position synchrony, beam profile comparisons, constancy checks, and dose rate checks.

continued



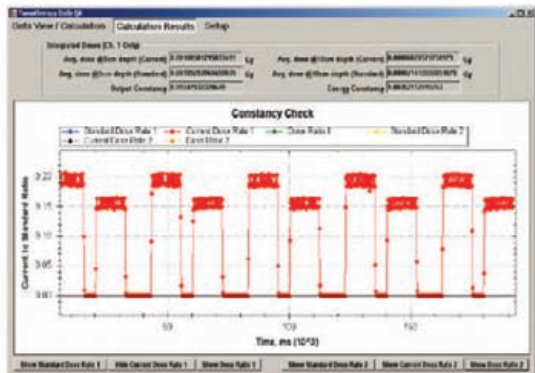
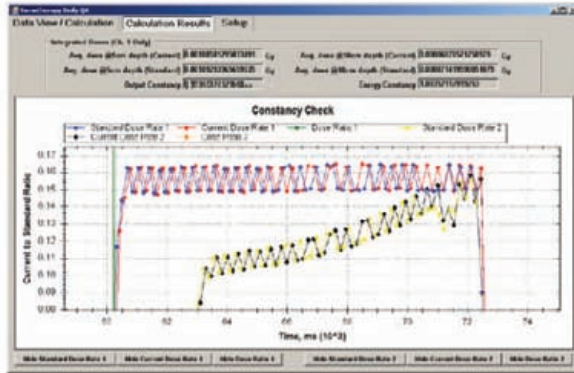
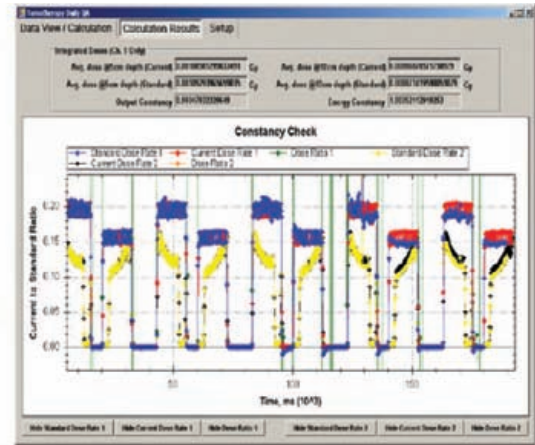


GAMMEX 507

RADIATION ONCOLOGY

continued from front...

The analytical software allows inspection of the MLC and Gantry position synchrony, beam profile comparisons, constancy checks, and dose rate checks.



SPECIFICATIONS

Size 35.3x15x20 cm

Weight 2 kg

Gammex 507 includes:

Phantom with 2 ion chamber adaptors, 1 blank plug, Analytical Software package, and rugged carrying case.