



Precision Resolution Grey Scale Phantom

GAMMEX 405GSX LE

Advanced tissue mimicking gel and grey scale targets are designed for the exacting standards of today's high-resolution ultrasound systems. The Precision Resolution Grey Scale Phantom 405GSX LE incorporates our new Tissue Mimicking (TM) gel which provides a smoother background texture than conventional tissue mimicking gels.

Gammex TM gels are fully compatible with the latest in tissue harmonics equipment and technology. The phantom can be scanned using normal control settings and ensures that the performance measured closely approximates the scanner's performance in a clinical examination. In addition, the phantom has a new composite film scanning surface that has improved

transmission properties so more of the ultrasound beam can be transmitted and received.

The 405GSX LE contains all of the quality indicators for performing evaluations of axial resolution, lateral resolution, dead zone cyst imaging, vertical and horizontal distance accuracy and image uniformity. The Precision Resolution Grey Scale Phantom also contains triangular grey scale targets which test the resolution of today's high-performance ultrasound scanners. Unique to the 405GSX LE are two horizontal cross fibers located in the middle of the phantom. These fibers help the user align the transducer and can be used as a reference "marker" to ensure that QA tests are consistently performed on the same scan slice.

continued



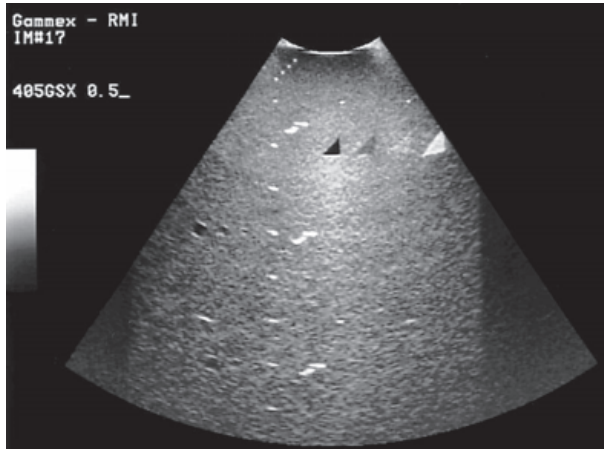
GAMMEX 405GSX LE

ULTRASOUND

continued from front...

When both fibers are illuminated, the user can be certain the transducer is exactly perpendicular to the scanning surface.

Optional accessories for the Gammex line of Ultrasound phantoms include Soft Foam-Lined Carrying Case, Rigid Case, or the Precision Ultrasound Transducer Guide.



This ultrasound image demonstrates a scan of the Precision Resolution Grey Scale Phantom 405GSX LE. Note the triangular grey scale targets specifically designed to test high-resolution scanners

SPECIFICATIONS

Targets Configuration

Anechoic Cysts

Diameters 2, 4 and 6 mm
Placement 3, 8 and 14 cm deep
Speed of sound . . 1540 ±10 m/s at 22°C
Attenuation 0.5 or 0.7 ±0.05 dB/cm/MHz

Grey Scale Targets

Dimensions 9.5x9.5x10.9 mm
Placement 4 cm deep
Speed of sound . . 1540 ±10 m/s at 22°C
Attenuation
coefficient same as background
Contrast. low scatter, -6dB, +6dB;
high scatter relative to background

Pin Targets

Diameter 0.1 mm (0.004 in)
Vertical spacing. . 20 mm at 2-16 cm deep
Horizontal
spacing 30 mm at 2 and 12 cm deep
Construction

Scanning

surface Composite Film
Walls Extruded ABS
Dimensions 23.2x8.25x18.5 cm
(9.25x3.25x7.25 in)
Weight 2.8 kg (6 lbs 5 oz)
All acoustic measurements at 4.5 MHz, 22°C