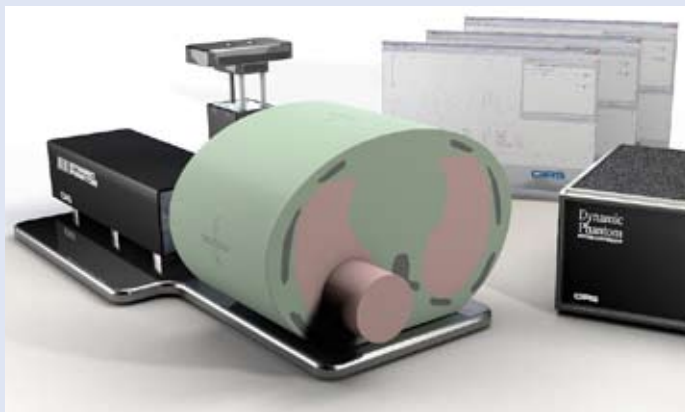


Xsight® Lung Tracking Phantom Kit & 4D Planning Phantom



Model 18023 Lung Tracking Phantom Kit

Quality Assurance and E2E testing on Cyberknife® Systems

The CIRS Model 18023 Xsight® Lung Tracking “XLT” Phantom Kit and Model 18043 4D Planning “4DP” Phantom have been verified and validated by Accuray for use with CyberKnife systems and both are designed to work in conjunction with the Synchrony System.

Benefits:

- Use Xsight® Spine Tracking System for initial phantom alignment
- Display detected respiratory motion of tissue-simulated torso, lung tumor, and critical structures with Synchrony System
- Execute E2E software analysis of the films (without CT number adjustment)
- Visualize 4D treatment optimization using the MultiPlan System

The XLT phantom body, model 18023, represents an average human thorax in shape, proportion and composition.

Features:

- 3D anthropomorphic spine with cortical and trabecular bone, ribs, and lung lobes
- Lung Ball Cube Rod with tumor-simulating target and radiochromic film
- Pre-programmed motion controller, motion actuator box for linear target motion, and surrogate platform



Model 18043

The 4DP phantom, model 18043, can be interchanged with the XLT body and connected to the motion actuator box.

The 4DP pre-programmed motion has a start position 90° clockwise from the XLT motion.

Features:

- Modified phantom body with lung lobes and spine
- High-density Lung Ball Cube Rod with tumor-simulating target and radiochromic film
- Rotating (manual) trabecular bone-equivalent spine with film insert