

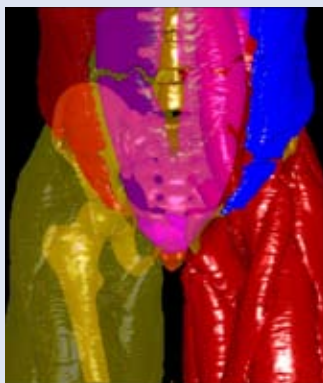
Virtual Human Male Pelvis Phantom



Model 801-P

Validate IGRT Systems

The Virtual Human Male Pelvis Phantom is the most realistic, tissue equivalent phantom available. It contains anatomically precise bone, cartilage, spinal cord, vertebral disks, muscle, intestines, bladder, prostate, rectum and interstitial fat. The phantom is made from proprietary epoxy materials that mimic the density and radiation attenuation properties of human tissue within 1% from 50 keV to 25 MeV.



Anatomical dimensions of the phantom are based on The Visible Human Project (<http://www.nlm.nih.gov/visiblehumanproject/>) data sets that serve as a reference for the study of human anatomy.

