

# Vascular Access Training Phantom Kit

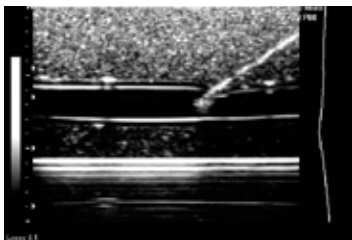


**Model 072**

*Demonstrate • Train • Experiment*

The Model 072 Vascular Access Training Phantom Kit is designed to provide realistic training medium for needle insertion. The phantom is made from a durable elastomeric compound mimicking the tactile feel and puncture resistance of soft tissue. This material has realistic acoustic properties allowing imaging of the simulated vessels under ultrasound. The phantom includes one bifurcated vessel and 2 straight vessels at a variety of depths and diameters to simulate a range of challenges often encountered in the clinical environment.

The phantom can be easily replenished using a syringe and will not dry out. The phantom is supplied with a start up accessory kit.



Cross section of the vessels