

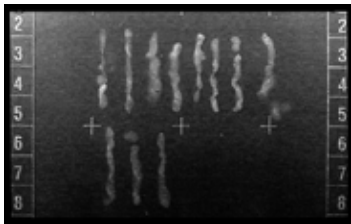
Specimen Imaging and Transport Container



Model 240

An efficient system for imaging, transporting and identifying breast biopsies and multiple core specimens

GRID-VIEW® address inadequacies which exist in post operative handling of surgical breast biopsy specimens and multiple core biopsy specimens. The clamshell design and radio-opaque grid provide an efficient system for imaging, transporting and identifying breast biopsies. Disposable GRID-VIEW containers accommodate the largest surgical specimens without compromising performance or convenience. A variety of grid patterns are available.



GRID  **VIEW**®