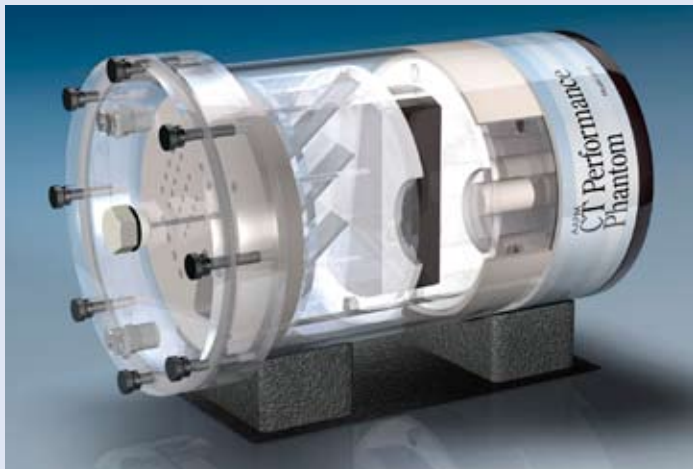


AAPM CT Performance Phantom



Model 610

The CIRS Model 610 AAPM CT Performance Phantom offers the user a single test object that measures ten distinct CT performance parameters. The phantom design is based on the guidelines presented in Report #1 of the American Association of Physicists in Medicine Task Force on CT Scanner Phantoms. The goals of report #1 were to “(1) define ‘performance’ of a CT scanner and (2) describe methods of performance testing through utilization of particular phantoms.”

A CT number linearity insert, high contrast resolution insert and slice width insert are housed in an 8.5” diameter PMMA water tank with quick disconnect valves for ease of filling and draining between use. Also included is a 0.25” bone equivalent ring that can be fit over

the inserts to evaluate the effects of beam hardening.

A contrast test object is adhered to the bottom of the tank that includes two rows of cavities from 1 to 0.125” diameter. The cavities can be filled with various solutions for contrast evaluation. An aluminum alignment insert is incorporated in the lid of the tank and can be interchanged with a polystyrene TLD insert for dose measurements.

A user’s guide, holding cradle, filling tubes and other accessories are included.

Optional items:

Low contrast inserts, whole body resolution/noise ring, TLD insert, Low contrast insert - spherical targets and carry case.

