

Disk & Rod Sources

Disk Source

Disk Sources are mainly used for checking the performance of GM tubes and NaI detectors. The disks measure 1" (25.4 mm) by 0.25" (6.35 mm) and are manufactured of high-strength plastic. The active diameter of the disk is 0.197" (5.0 mm) with the active area centered in the disk.



Capintec offers the highest quality disk source at the lowest cost (to you.) There are many more nuclide disk sources available than are shown. If you do not find the source you need, call Capintec; we will let you know what is available.

DISK SOURCES ARE 25 mm (0.250") THICK, NIST TRACEABLE +/-5% GAMMA

Am-241 0.370 MBq- (10 µCi) Disk	0975-128S
Ba-133 0.037 MBq- (1 µCi) Disk.....	0975-130S
Cd-109 0.370 MBq- (7-10 µCi) Disk.....	0975-105S
Cs-137 0.037 MBq- (1 µCi) Disk.....	0975-131S
Cs-137 0.37 MBq- (10 µCi) Disk.....	0975-139X
Co-57 0.037 GBq- (1 mCi) Disk.....	0975-129S
Co-60 0.037 MBq- (.7-1 µCi) Disk.....	0975-134S
I-129 3700 Bq- (0.1 µCi) Disk	0975-186S
Mn-54 0.037 MBq- (1 µCi) Disk	0975-132S
Na-22 0.037 MBq- (1 µCi) Disk.....	0975-133S
Co-57, Na-22, Cs-137, Mn-54, Co-60, Ba-133(1 µCi), Cd-109 (7-10 µCi) Disk ALPHA	0975-101S

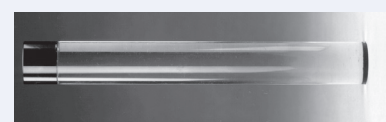
Am-241 0.1 µCi NIST Traceable +/- 5% in A-2 Disk, 0.5mm dia. ALPHA.....	0975-0241
Sr-90/Y-90 0.1 µCi NIST Traceable +/- 5% in A Disk, 25.4mm dia. BETA.....	0975-0090
Tc-99 0.1 µCi NIST Traceable +/- 5% in A Disk, 25.4mm dia. BETA.....	0975-0099

* Shorter 3" size must be custom ordered.
When ordering, please specify rod size.

**Custom Activities Available Upon Request. Please
Call (800) 631-3826**

Rod Source

Capintec offers a wide variety of *Rod Sources for well counters to satisfy the needs of your department.



These sources are used for calibrating well type NaI detectors. They are constructed of high-strength plastic to withstand the rigors of constant use in a busy department. They have a flat base which allows easy positioning in the vertical position required for consistent accuracy (in the counting of) many tests.

Capintec Rod Sources are calibrated as NIST traceable with an accuracy of ± 5% at the 99% confidence level. Each source consists of a lucite rod measuring 12.7 mm (0.5") x 75 mm (2.95") as a standard size. The active diameter of the rod source is 0.187" (4.75 mm).

ROD SOURCES 12.7mm (0.5") X 127mm (5")

NOMINAL CALIBRATION +/-15%

Eu-152- (0.5 µCi Rod)	0975-152R
Cs-137- (0.5 µCi Rod).....	0975-137R

ROD SOURCES 12.7mm (0.5") X 127mm (5") NIST TRACEABLE +/-5%

Ba-133 3700 Bq- (0.1 µCi) Rod	0975-138S
Ba-133 0.370 MBq- (10 µCi) Rod.....	0975-138T
Cd-109 0.037 MBq- (1 µCi) Rod.....	0975-146S
Cd-109 0.370 MBq- (7-10 µCi) Rod.....	0975-146T
Cs-137 3700 Bq- (0.1 µCi) Rod	0975-139S
Cs-137 0.037 MBq- (1 µCi) Rod.....	0975-139R
Cs-137 0.370 MBq- (10 µCi) Rod.....	0975-139T
Co-57 3700 Bq- (0.1 µCi) Rod.....	0975-137S
Co-57 37 kBq- (1.0 µCi) Rod.....	0975-0025
Co-57 0.370 MBq- (10 µCi) Rod	0975-137T
Co-60 3700 Bq- (0.1 µCi) Rod.....	0975-142S
Co-60 0.037 MBq- (1 µCi) Rod	0975-142R
Co-60 0.370 MBq- (7-10 µCi) Rod.....	0975-142T
I-129 3700 Bq- (0.1 µCi) Rod	0975-135S
Mn-54 3700 Bq- (0.1 µCi) Rod.....	0975-140S
Mn-54 0.370 MBq- (10 µCi) Rod	0975-140T
Mn-54 37 kBq - (1.0 µCi) Rod.....	0975-0026
Na-22 3700 Bq- (0.1 µCi) Rod	0975-141S
Na-22 0.320 MBq- (7-10 µCi) Rod	0975-141T
Na-22 37 kBq- (1.0 µCi) Rod	0975-0027
Rod Set: Co-57, Na-22, Cs-137, Mn-54 Co-60, Ba-133 (0.1 µCi), Cd-109 (1 µCi) Rods.....	0975-100S
Rod Set: Co-57, Na-22, Cs-137, Mn-54 Co-60, Ba-133 (.1 µCi), Cd-109 (7-10 µCi) Rods	0975-100T